

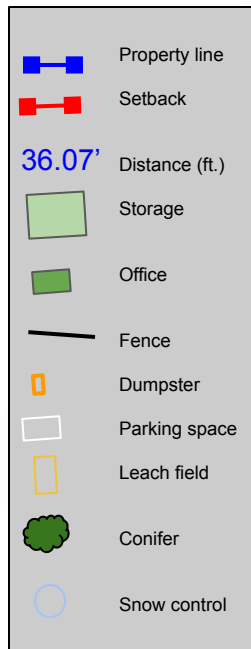
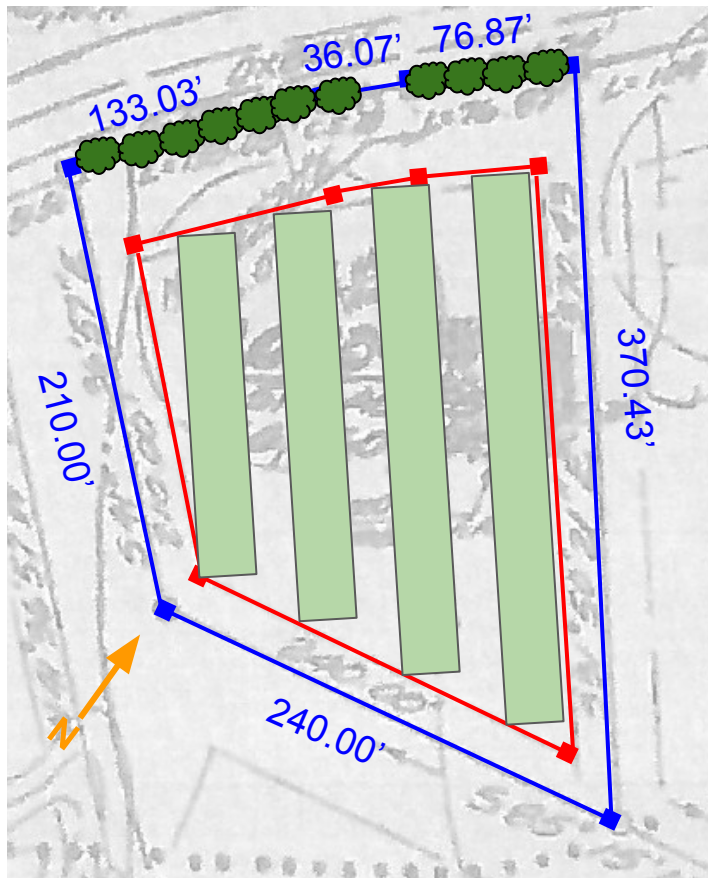
Site Plan

Map 267 Lot 48
Oxbow Pond Road
Canterbury, NH

- 1.516 acre parcel
- ~16,500 sq. ft. of storage
- ~300 sq. ft. office and food pantry
- 8' Black aluminum fence
- Single entrance with automatic gate
- Conifer screen frontage
- Gravel with floating slabs
- Single sign at entrance
- Drive in food donation facility
- NH Food Bank rent incentives
- Owner attended business hours
- 24/7 gate access w/ security system
- Solar powered operation



Site Plan 30' wide buildings



**NOT TO SCALE,
BUT CLOSE**



Office



12' x 24' Office and Food Pantry with 12' x 20' interior (4' front porch)
Front entry and counter for customer interaction
Side and rear entry for food donation collection and organization
Solar (~4kW) on south facing roof with electric baseboard heat

Buildings



30' wide steel construction single story storage

Mix of 5' x 5', 5' x 10', 10' x 10', 10' x 15', and 10' x 20' depending on market research

Motion activated interior lighting and all units locked whether rented or not

Down directed dim exterior lighting (no posts)