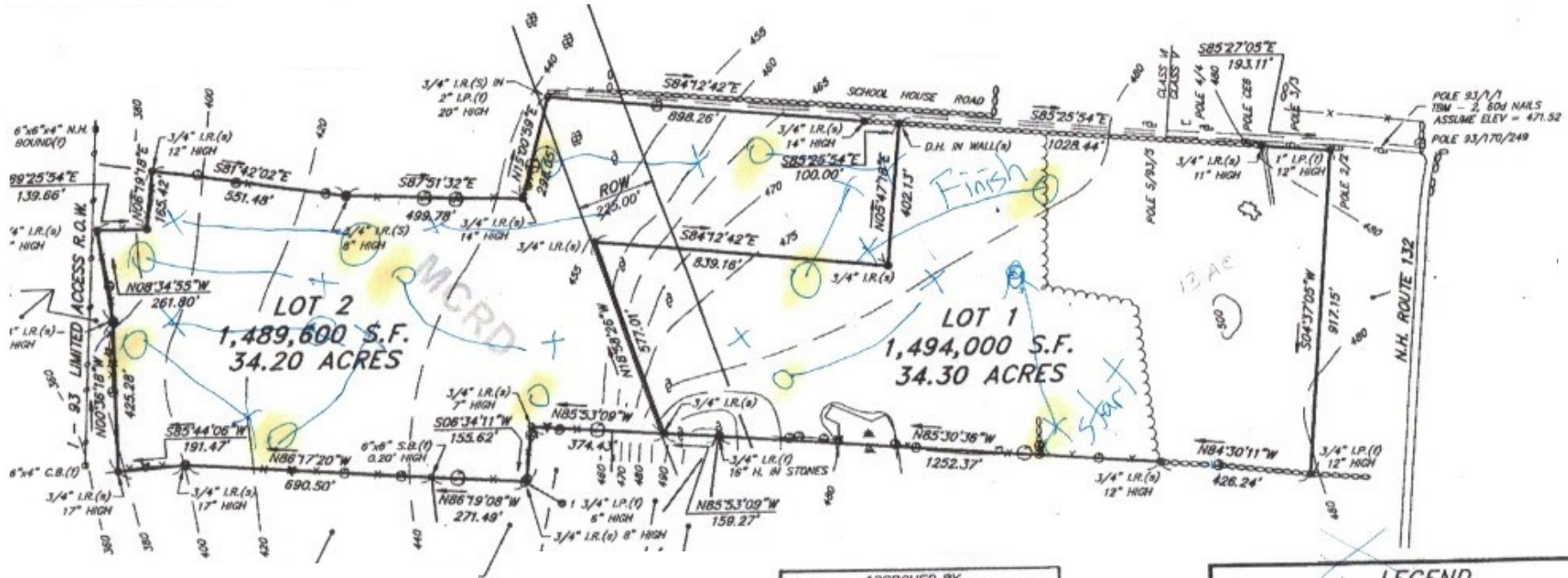


Gilman Girls LLC and Hawkins properties
 Old Schoolhouse Rd, Canterbury
 with layout of proposed disc golf holes

TAX MAP
 NOT TO SCALE



ER:

January 3, 1989

APPROVED BY
 THE CANTERBURY PLANNING BOARD
 DATE: 1/3/89
 CHAIRMAN: Alan Hubbard

GRAPHIC SCALE



LEGEND

- WELL
- IRON PIN/PIPE
- STONE WALL
- DECIDUOUS TREE
- CONIFEROUS TREE
- ⊗ STUMP
- UTILITY POLE
- DRILL HOLE
- TREE-LINE
- PAVEMENT
- I.R. IRON ROD (f) = FOUND
- I.P. IRON PIPE (s) = SET

DEED REFERENCE
 M.C.R.D. BK. 1214 PG. 249
 TAX MAP NO. 9, LOT NO. 020/000

MILLER ASSOCIATES
 ENGINEERS - CONSULTANTS

15 WATER STREET
 CONCORD, N.H.
 (603) 228-3241



SUBDIVISION PLAN

DESIGNED BY: D.R.S.	DRAWN BY: M.D.S.	CHECKED BY: B.G.M.	SCALE: 1" = 200'	DATE: MAY 3, 1988
------------------------	---------------------	-----------------------	---------------------	----------------------

**SUBDIVISION OF
 THE PROPERTY OF
 KENNETH & JACQUELINE GILMAN
 SCHOOL HOUSE ROAD
 CANTERBURY, NH 03224**

PROJECT NO. 88-016
BOOK NO. DW88-25
PAGE NO. 2-33
FILE NAME 88016FP1
SHEET 1 OF 1 SHEETS