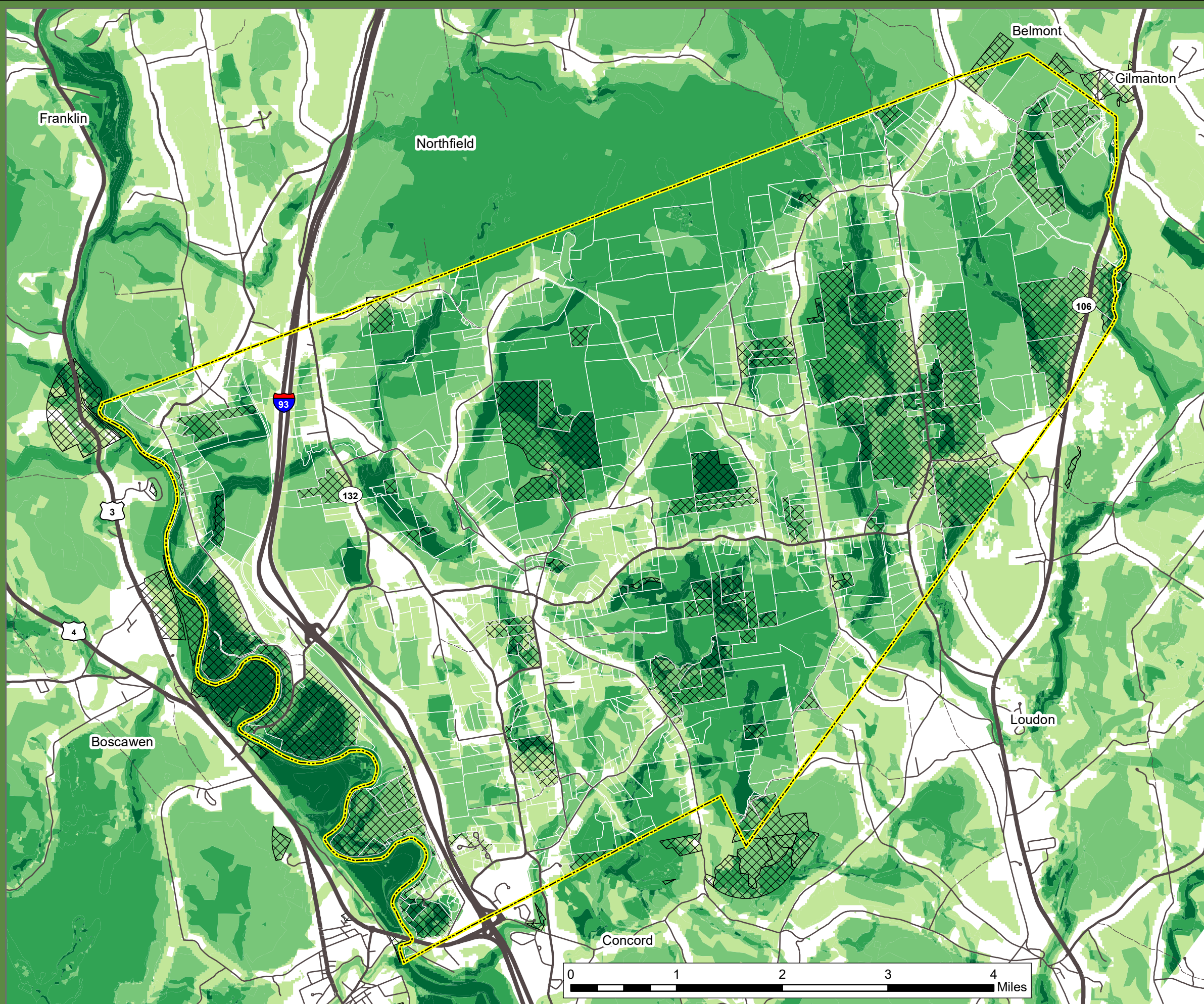


Canterbury Co-Occurrence



Co-Occurring Layers

- 1 - 2
- 3 - 4
- 5 - 6
- 7 - 11
- Conservation Lands

Roads

- Interstates
- Class II and IV Highways
- Class V Town Roads
- Class VI Roads
- Town Boundary

Acres of Co-Occurring Layers

0 - 2,958.96	3 - 4,032.10	6 - 4,018.43	9 - 117.74
1 - 2,303.45	4 - 5,020.21	7 - 1,898.26	10 - 9.05
2 - 2,535.50	5 - 5,144.42	8 - 658.40	11 - 0.21

NOTE: Co-occurrence values are a product of unfragmented lands that maintain an area > 100 and > 500 acres with a 400ft road buffer, the 100 year floodplain, lakes and ponds, rivers and streams with their respective 250ft resource buffers, associated wetlands, active agricultural land, prime soils and parcels adjacent to current conservation land. The 2015 NH Wildlife Action Plan Habitat tiers data has also been included. Highest Ranked in State has been assigned 3 points, Highest Ranked in Region received 2 points, and Supporting Landscapes were given 1 point.

*Easement boundaries that do not make up a full parcel are approximated. For planning purposes only. Conservation lands outside Canterbury are drawn to a half-mile buffer.

Data Sources: NH GRANIT, NHDOT, NHDES, NH Fish & Game, Town of Canterbury, CNHRPC.

Central New Hampshire
Regional Planning Commission
28 Commercial Street, Suite 3
Concord, NH 03301
603.226.6020
www.cnhrpc.org

Date Created: 1/6/2016

